



**PROTEZIONE ELEMENTI STRUTTURALI**

**RIQUALIFICAZIONE CEMENTO ARMATO**

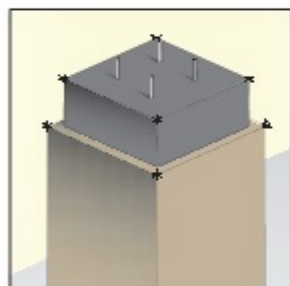
**R30-R240 CLASSE A1**

CERTIFICATI: - CSI DC02-003-F04 R30-R240 UNI ENV 13381-3

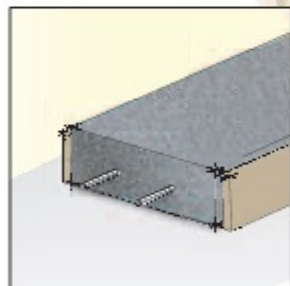
- 872013 0710 CALCOLO DEL RAPPORTO DI EQUIVALENZA FRA SUPERSIL E CALCESTRUZZO

RAPPORTO DI EQUIVALENZA GARANTITO:

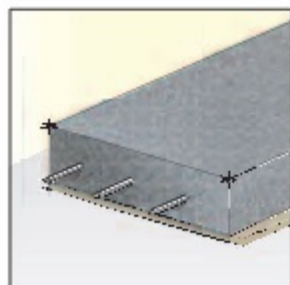
SUPERSIL SP. 6 mm 3,1 - SUPERSIL SP. 8 mm 4,0 - SUPERSIL SP. 9 mm 4,5 - SUPERSIL SP. 12 mm 6,2



| PILASTRI |     | COPRIFERRO MINIMO |      |      |
|----------|-----|-------------------|------|------|
|          |     | 10mm              | 20mm | 30mm |
| R        | 30  | 6                 | 6    | 6    |
|          | 60  | 6                 |      |      |
|          | 90  | 8                 |      |      |
|          | 120 | 12                | 8    | 8    |
|          | 180 | 8+8               | 12   |      |
|          | 240 | 8+8               | 8+8  |      |



| TRAVI |     | COPRIFERRO MINIMO |      |      |
|-------|-----|-------------------|------|------|
|       |     | 10mm              | 20mm | 30mm |
| R     | 30  | 6                 | 6    | 6    |
|       | 60  | 6                 |      |      |
|       | 90  | 8                 |      |      |
|       | 120 | 12                | 8    | 8    |
|       | 180 | 8+8               | 12   |      |
|       | 240 | 8+8               | 8+8  |      |



| SOLETTE |     | COPRIFERRO MINIMO |      |      |
|---------|-----|-------------------|------|------|
|         |     | 10mm              | 20mm | 30mm |
| R       | 30  | 6                 | 6    | 6    |
|         | 60  |                   |      |      |
|         | 90  |                   |      |      |
|         | 120 | 8                 | 6    | 6    |
|         | 180 |                   |      |      |
|         | 240 |                   |      |      |